

INCREMENTAL ENCODERS

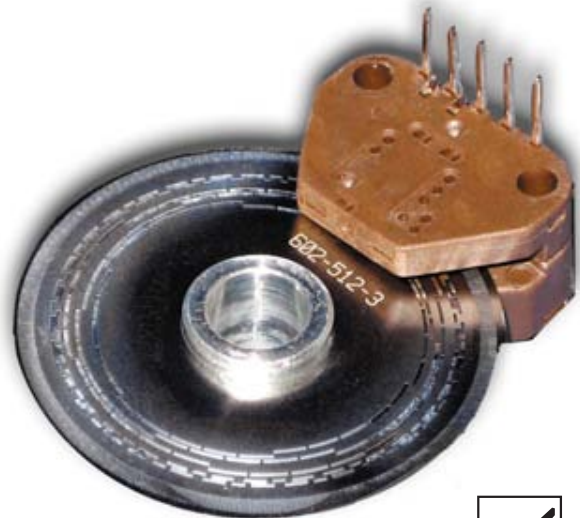
SERIES M602 & M832

Dynapar™ brand

Kit Encoder

Key Features

- Compact Size for Easy Integration
- Advanced Phased-Array Sensor Technology with Digital Output
- Available with Unbreakable Plastic or Stainless Code Discs

SSM
Servo Small Motor

SPECIFICATIONS

ELECTRICAL

Code: Incremental**Resolution:** See ordering information for standard resolutions**Supply Voltage:** 5Vdc + 10% at 60mA maximum**Output Format:** Dual channel quadrature with index**Output Type:** Square wave, TTL and CMOS compatible, 10mA sink**Frequency Response:** 125 kHz (data and index)**Connector:**

Molex Connector: P/N 50-57-9005

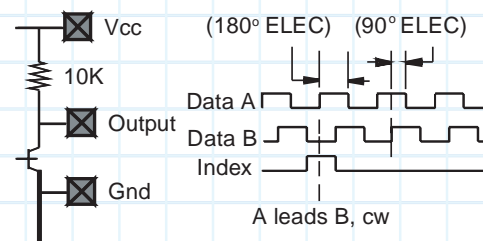
Molex Socket: P/N 16-02-0069

AMP Connector: P/N 87499-9

AMP Socket: P/N 87667-3

DIGITAL OUTPUT FORMAT

OUTPUT STAGE DATA AND INDEX



Reading from top as shown in picture.

MECHANICAL

Dimensions: See module outline dimensions**Bore Diameter:** 1/4", 3/8", 6mm, 8mm, 10mm**Disc Interface****Runout:** 0.005 inches TIR**Endplay:** + 0.010 inches**Termination:** .025 sqr. discrete pins**Optical Radius (data):** 0.602 or 0.832 inches**Motor Interface****Mounting Holes:** See recommended mounting**Materials****Module:** Molded PPS 40% glass (R-4)**Pins:** Gold Plated**Disc:** Mylar or Etched Metal**Hub:** Aluminum**Weight:** <0.25 ounces

ENVIRONMENTAL CONDITIONS

Operating Temperature: -40° to 100°C (non-condensing)**Storage Temperature:** -40° to 100°C**Enclosure:** Unsealed housing

INCREMENTAL ENCODERS

by  DYNAPAR™ SERIES M602 & M832

ORDERING INFORMATION

To order, complete the model number with code numbers from the table below:

<p>Encoder Module (Rotary)</p> <p>Digital M 602 - 1000 - 3T - See ★ Note</p> <p style="text-align: center;">1. 2. 3.</p>	<p>Code Disc and Hub</p> <p>DH 602 - 1000 - 0 - 25</p> <p style="text-align: center;">1. 2. 3. 4.</p>		
<p>Code Disc Only (no Hub)</p> <p>D 602 - 1000 - 0</p> <p style="text-align: center;">1. 2. 3.</p>	<p>Code Disc Only (no Hub)</p> <p>D 602 - 1000 - 0</p> <p style="text-align: center;">1. 2. 3.</p>		
<p>1. Optical Radius 0.602 inches 602 0.832 inches 832</p> <p>2. Standard Resolutions Digital 602 Module Resolutions from 35 to 3600. See "Current Resolutions" list. Digital 832 Module Resolutions from 360 to 5000 See "Current Resolutions" list.</p> <p>3. Lead Positions Digital Side Exit Top Exit ABZ 3S ABZ 3T</p>	<p>1. Disc Outside Diameter 1.30 inches 602 1.75 832</p> <p>2. Standard Resolutions See "Current Resolutions" list.</p> <p>3. Commutation Tracks (Not Available) Default Option 0</p> <p>4. Hub Bore Size* 1/4 inch 25 6mm 6M 3/8 inch 38 8mm 8M 10mm 10M *Consult factory for other sizes</p>		
<p>Current Resolutions</p> <table style="width: 100%; border: none;"> <tr> <td style="width: 50%; border: none;"> <p>M602 Digital Modules 1, 24, 25, 35, 40, 60, 100, 120, 192, 200, 240, 250, 256, 300, 360, 500, 512, 600, 625, 720, 1000*, 1024*</p> <p>* Available as direct read or doubler Doubler: 1000, 1024, 1200, 1250, 1440, 2500, 2540, 2600 3600</p> </td> <td style="width: 50%; border: none;"> <p>M832 Digital Modules Direct Read: 360, 1000, 1024 Doubler: 2000, 2048, 3600, 4096, 5000</p> </td> </tr> </table>		<p>M602 Digital Modules 1, 24, 25, 35, 40, 60, 100, 120, 192, 200, 240, 250, 256, 300, 360, 500, 512, 600, 625, 720, 1000*, 1024*</p> <p>* Available as direct read or doubler Doubler: 1000, 1024, 1200, 1250, 1440, 2500, 2540, 2600 3600</p>	<p>M832 Digital Modules Direct Read: 360, 1000, 1024 Doubler: 2000, 2048, 3600, 4096, 5000</p>
<p>M602 Digital Modules 1, 24, 25, 35, 40, 60, 100, 120, 192, 200, 240, 250, 256, 300, 360, 500, 512, 600, 625, 720, 1000*, 1024*</p> <p>* Available as direct read or doubler Doubler: 1000, 1024, 1200, 1250, 1440, 2500, 2540, 2600 3600</p>	<p>M832 Digital Modules Direct Read: 360, 1000, 1024 Doubler: 2000, 2048, 3600, 4096, 5000</p>		

*** NOTE: When ordering Modules with Index add a "G" to the end of the part number for GATED INDEX or "U" for UNGATED INDEX.**

Note: Gated Index only available on Doubler Modules.

When ordering Modules in 1000 or 1024PPR to specify DOUBLER CIRCUIT add a "D" to the last digit.

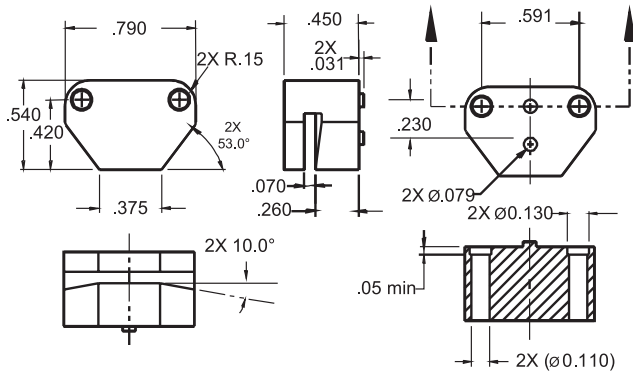
Example: M602-1000-3T-UD

INCREMENTAL ENCODERS

SERIES M602 & M832

Dynapar™ brand

Module Outline Dimensions



Pin Layouts

The Optical Encoder Modules come standard in either top mount or s mount with A,B, and Index Channels.

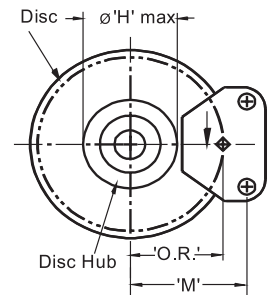
Module Interface

Module 602

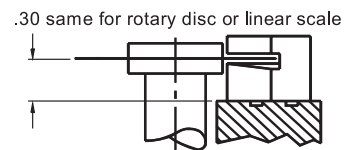
'O.R.' – Optical Radius 0.602 in.
'M' – Mounting dimension .. 0.756 in.
Ø 'H' – Hub Maximum O.D. ... 0.061 in.

Module 832

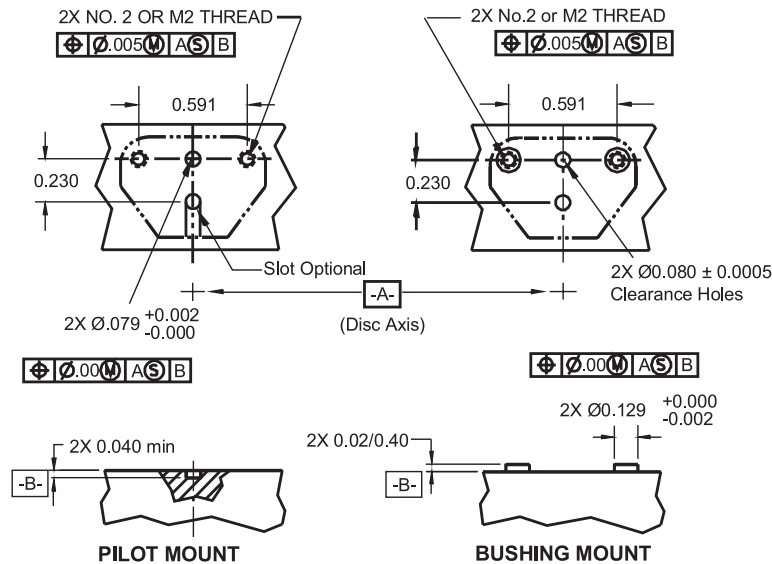
'O.R.' – Optical Radius 0.832 in.
'M' – Mounting dimension... 0.986 in.
Ø 'H' – Hub maximum O.D... 1.07 in.



DISC MOUNTING



Recommended Mounting Configurations



INCREMENTAL ENCODERS

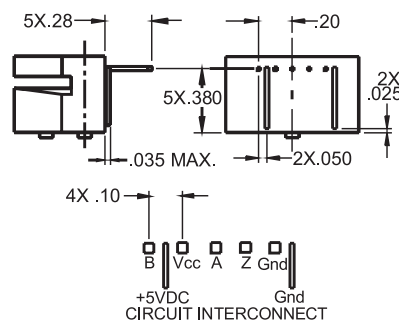
by **DYNAPAR™ SERIES M602 & M832**

Pin Layouts

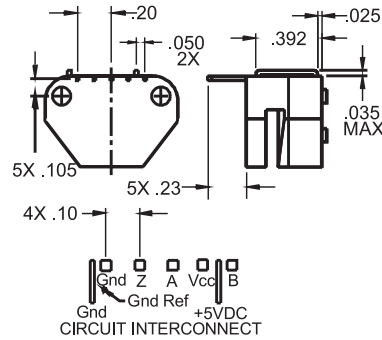
The Optical Encoder Modules come standard in either top mount or s mount with A,B, and Index Channels.

ABZ CONFIGURATION
5X .025 square pins

SIDE MOUNT (-1S,-2S,-3S)



TOP MOUNT (-1T, -2T, -3T)



Disc and Hub Dimensions

Module 602 Disc and Hub

Ø'D' – Disc O.D.1.30 in.

Ø'H' – Hub O.D.0.61 in.

Module 832 Disc and Hub

Ø'D' – Disc O.D.1.75 in.

Ø'H' – Hub O.D.1.00 in.

Shaft Size Hub Bore Sizes

	Ø'B' in.	Ø'B' mm
	+0.0005	+0.013
	+0.0000	-.000
1/4 in.	.2500	6.350
3/8 in.	.3750	9.525
6 mm	.2362	6.000
8 mm	.3150	8.000
10 mm	.3937	10.000

Disc only

.3942 I.D. x .002 min. thick

